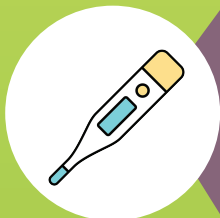


Comfort Care Hospice cares about the safety and well-being of our patients, their families, our referral partners, and employees. We have implemented the following practices to ensure everyone's safety.



We have all the required Personal Protective Equipment (PPE) to keep our patients and staff protected.



Daily temperature checks and COVID-19 symptom screenings are required for all employees.



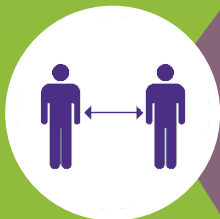
All patients and their caregivers are screened before and during visits for COVID-19 symptoms.



Our team members follow safety guidelines from the Center for Disease Control (CDC), Centers for Medicare and Medicaid Services (CMS), and state and local health departments.



We offer Telehealth Services to provide excellent care while respecting the social distancing requests of our patients, families, and nursing home partners.



Non-essential travel has been canceled and we are practicing social distancing in our offices. In person meetings have been canceled and are held via the web.

COMMITTED TO SAFETY AND EXCELLENCE